

The Suicide of Lucretia*

Lucas Cranach the Elder (1472-1553)

- Drawing -



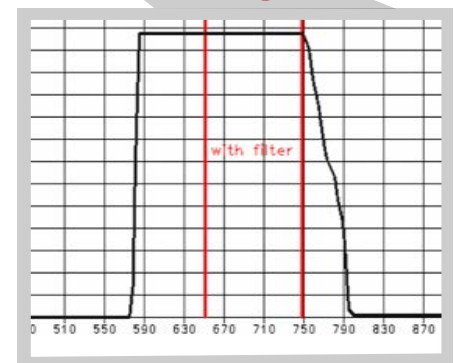
Spectral Range

Scan series with reflected light and reflected light plus transmitted light form the data-base for the multispectral analysis. The example shows the spectral range from 350nm up to 950nm (optional up to 1250nm) with a selected increment of 100nm.



The software filter processes the native analog information specific to each spectral region while automatically generating a color image, false colors (UV/IR/VIS), 3 color channels and grayscale.

MSP Filter Imager



Underdrawings

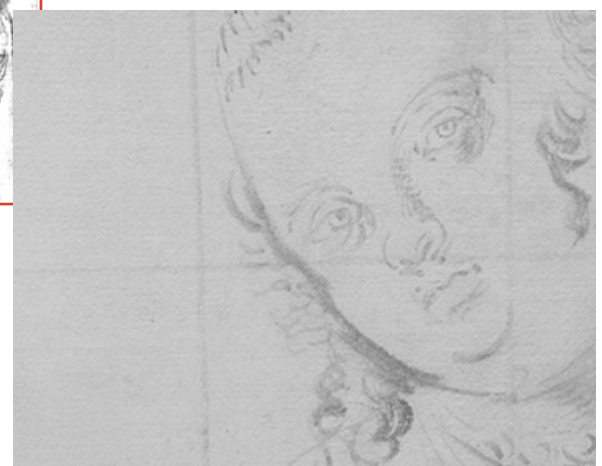


Underdrawing

Hatching

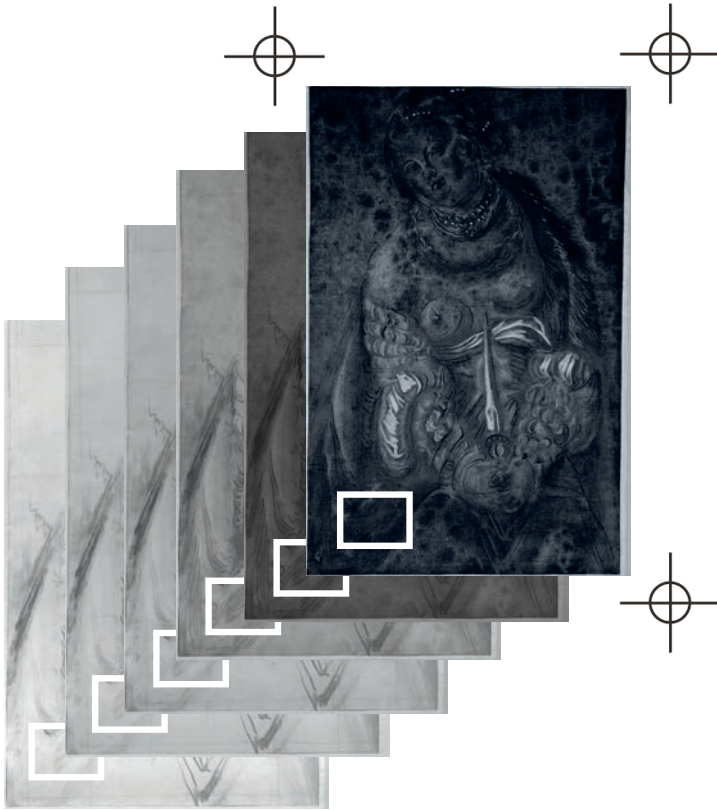
The different levels of the drawing are clearly distinguishable in the IR range.

Recognizable auxiliary lines might have been used as perspective tools for copies or scale changes.



Auxiliary Lines

Pixel Overlay



Analysis frames for defining specific sections

The pixel overlay technique allows to extract the material stucture, watermarks etc.

The pixel difference analysis allows detailed comparisons between the individual levels of the drawing:



Example: position correction of the right eye

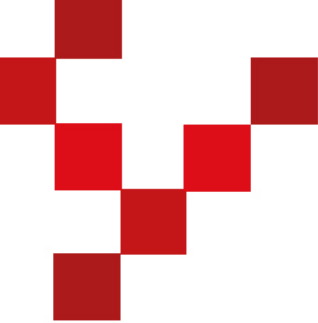
Authentication



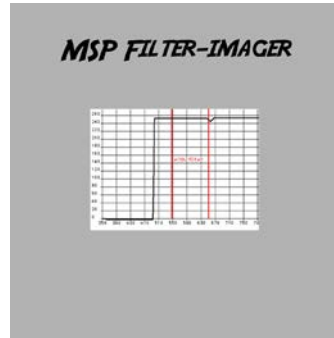
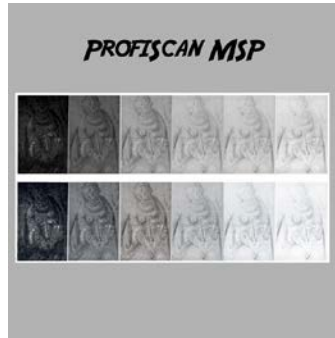
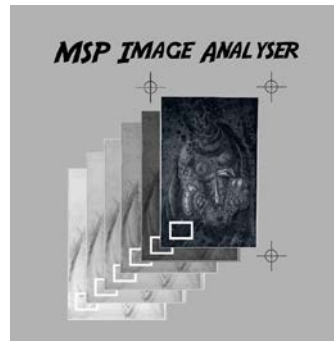
Material structure, watermarks, pentimenti, signatures, inscriptions, marks, auxiliary lines

Watermarks, signatures or material structures are visualized by the image analyser, providing evidence of origin and originality (comparison with databases or proofed originals of the artist).





Imaging Software



Multispectral Camera



71 Megapixel Multispectral Camera

X1spectral



150 Megapixel Multispectral Camera

X2spectral

* Klassik Stiftung Weimar - Graphic Art Collections

MICROBOX
Hohe Strasse 4-6,
61231 Bad Nauheim

www.book2net.net
mail@book2net.net
+49 (0) 6032 34 02 0